



**Plum Creek Watershed Partnership Steering Committee Meeting**

Lockhart State Park

2012 State Park Rd., Lockhart, TX 78644

Thursday, February 27, 2019

12:00 PM to 2:00 PM

**Agenda**

- 12:00 Sign-in, Welcome, Introductions, & Meal Served – Steve Risinger, PCWP**
- 12:20 Watershed Coordinator Updates – Steve Risinger, PCWP**
- 12:50 Kyle WWTP Expansion – Yvonne Gilvallejo, City of Kyle**
- 1:10 2020 Water Quality Report Discussion – Lee Gudgell, GBRA**
- 1:40 Steering Committee Member Updates**
- 2:00 Adjourn**

**Next Meeting:** May, 2020  
Location: TBD  
PCWP Meeting



Steve Risinger  
Plum Creek Watershed  
Coordinator

# Plum Creek Watershed Partnership Meeting

27, February, 2020

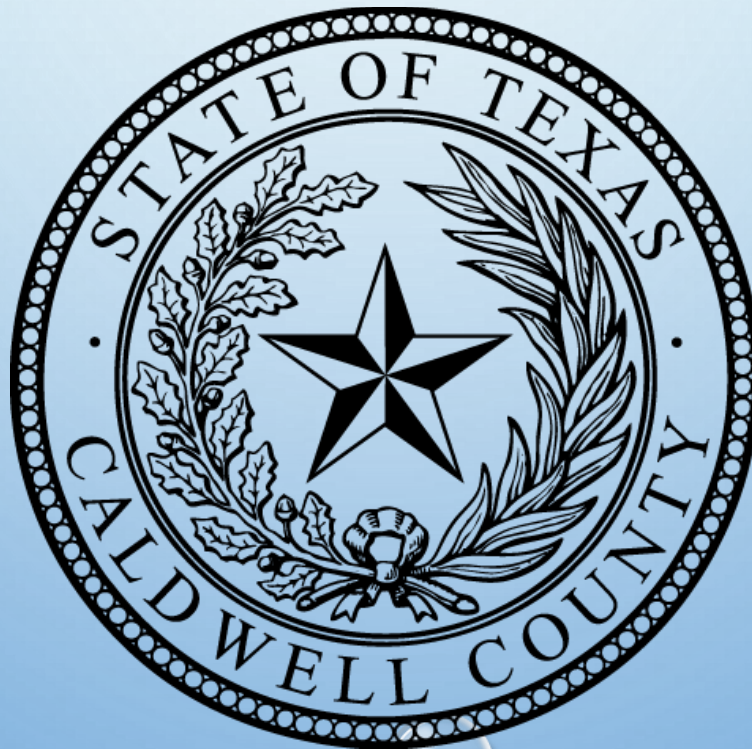
Lockhart State Park

# In Loving Memory of Chief Carine Calfoun





Lunch Sponsored by:  
Caldwell County





# Agenda

---

- ❖ Welcome And Introductions
- ❖ Watershed Updates
- ❖ City Of Kyle WWTP Expansion
- ❖ Water Quality Update
- ❖ Steering Committee Updates

The background is a dark gray gradient. It features several realistic water droplets of various sizes scattered across the surface. On the left side, there is a partial illustration of a bird, possibly a crow or raven, with its head and beak visible. The text 'Plum Creek' is written in a large, dark teal, cursive-style font, serving as a backdrop for the main title. The words 'Watershed Updates' are centered in a white, hand-drawn, slightly irregular font. At the bottom, the words 'Watershed Partners' are written in a smaller, dark brown, serif font, partially obscured by a dark teal curved line.

# Plum Creek Watershed Updates

Watershed Partners

# District Technician

---

- Larry Warren is an employee of the Caldwell-Travis SWCD
- He is a field technician who works with agricultural producers to develop water quality management plans and implement best management practices.

Caldwell County SWCD  
1403 Blackjack St. Lockhart,  
TX 78664  
(512) 398-2121





# Oil Spill in Uhland

---

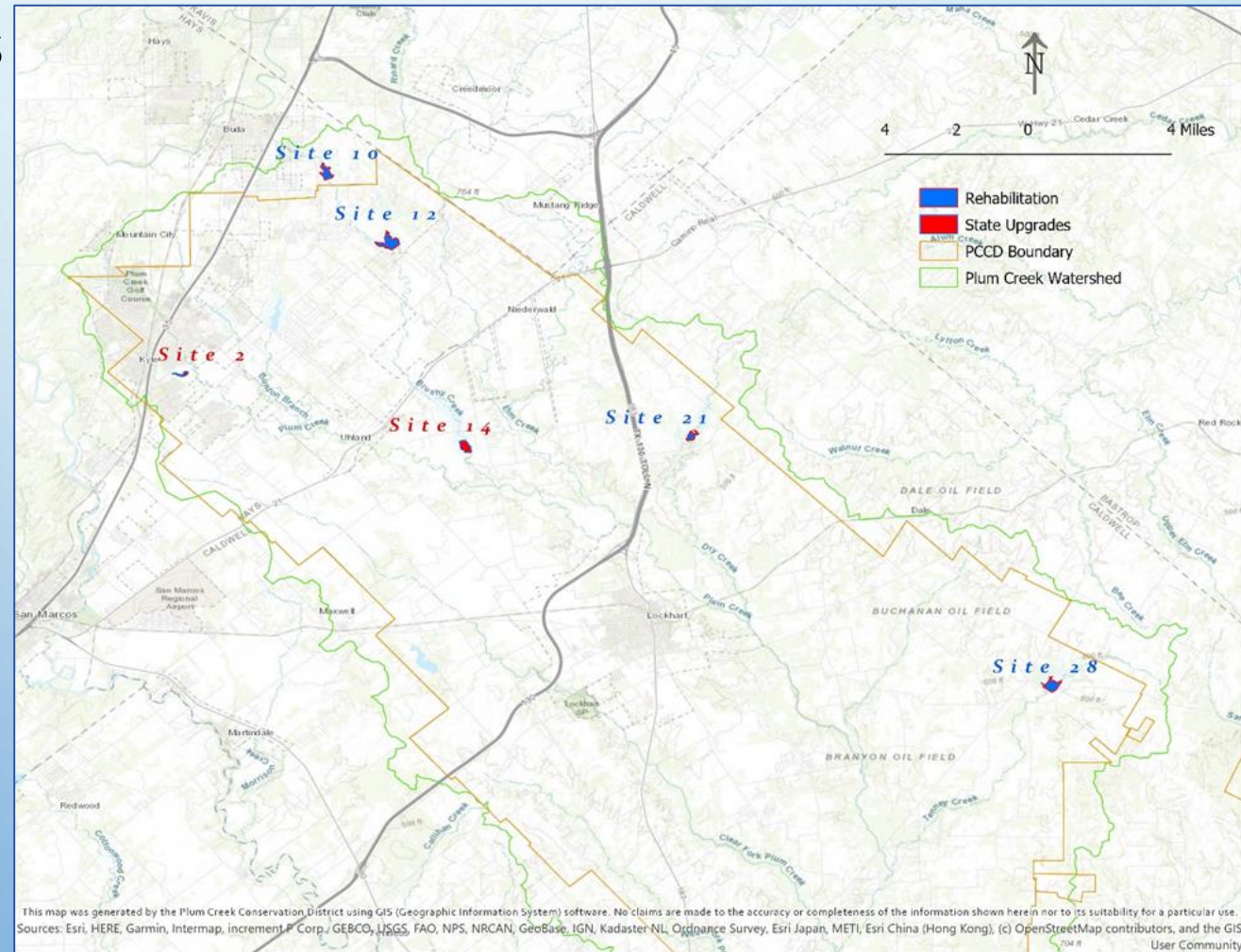
- Oil Spill in Uhland on HWY 21 IVO Plum Creek
  - 60 Gallons
  - Before precipitation
- City of Uhland Cleaned and disposed of oil waste at Caldwell County Unit Road





# Plum Creek Flood Control Structures

- State Upgrades
  - Site 2
  - Site 14
- Rehabilitation
  - Site 10
  - Site 12
  - Site 21
  - Site 28



# Town Branch Riparian Restoration

---

- Collaboration between:
  - TCEQ
  - City of Lockhart
  - Nueces River Authority
  - The Plum Creek Watershed Partnership
- Project Status:
  - No-mow grow areas established along Town Branch
  - Educational signage installed





Sensitive Creekside Area



# Grow Zone (No Mowing!)

## Riparian Zones with tall grasses and plants:

- Improve water quality and quantity
- Stabilize streambanks from erosion
- Provide wildlife habitat and food
- Shade streams and lower temperatures

## Zona ribereña delicada ¡No corte las hierbas!

## Zona ribereña de pastos altos y plantas silvestres:

- Mejoran la cantidad y calidad del agua
- Estabilizan los causes de erosión
- Proporcionan un entorno de vida silvestre y de alimentos
- Hay mucha sombra para el suelo y para moderar las temperaturas del agua



plumcreekwatershed.org





# Caldwell County Justice Center LID

- Collaboration Between:
  - TCEQ
  - Caldwell County
  - The Plum Creek Watershed Partnership
  - The Meadows Center
- Project Status:
  - Educational Signage Installed
  - Close Out Date February 29, 2020



## SAY GOODBYE TO WATERING YOUR LAWN

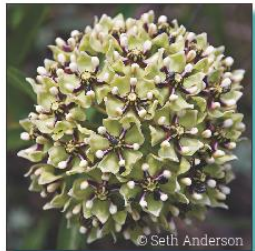
Did you know that landscape watering accounts for **more than 30 percent** of single-family residential water use in Texas?

Xeriscaping is a landscaping style that uses water-efficient, native plants to create a visually attractive landscape that thrives with very little water. Properly installed and maintained, a xeriscape can use **less than one-half** the water of a traditional landscape and require less maintenance than a landscape that is primarily lawn.

Xeriscaping is commonly used in arid or semi-arid environments and can be used to showcase a wide variety of hardy plants - from succulents to native grasses.

When designing your landscape for water efficiency, choose plants that are defined as low water use or drought tolerant for your area. The following plants are just a few species that are able to thrive in Central Texas with minimal, if any, need for supplemental watering.

**Here are some examples of plants you can use in your own backyard xeriscape:**



**Antelope Horn**  
*Asclepias asperula*



**Century Plant**  
*Agave americana*



**Mexican Bush Sage**  
*Salvia leucantha*



**Blue Grama Grass**  
*Bouteloua gracilis*



While xeriscapes vary greatly, they can often be recognized by their distinct drought resistant plants, rocky groundcover, and lack of an irrigation system.

Find out more about water conservation through landscaping and drought-tolerant plants here:

[www.wildflower.org](http://www.wildflower.org)

[www.texaslivingwaters.org](http://www.texaslivingwaters.org)

Funding for this project was provided in part by the EPA through the Texas Commission on Environmental Quality.

# RAIN GARDENS

**Is there a way to protect our waterways while also beautifying the landscape?**

Not only are rain gardens aesthetically pleasing, but they also filter pollutants that might reach the watershed via surface runoff. Rain gardens reduce surface runoff by intercepting and absorbing the water, along with bacteria and pollutants that might come along with it. Rain gardens can be used in both residential and commercial construction in low laying areas to capture the most water.

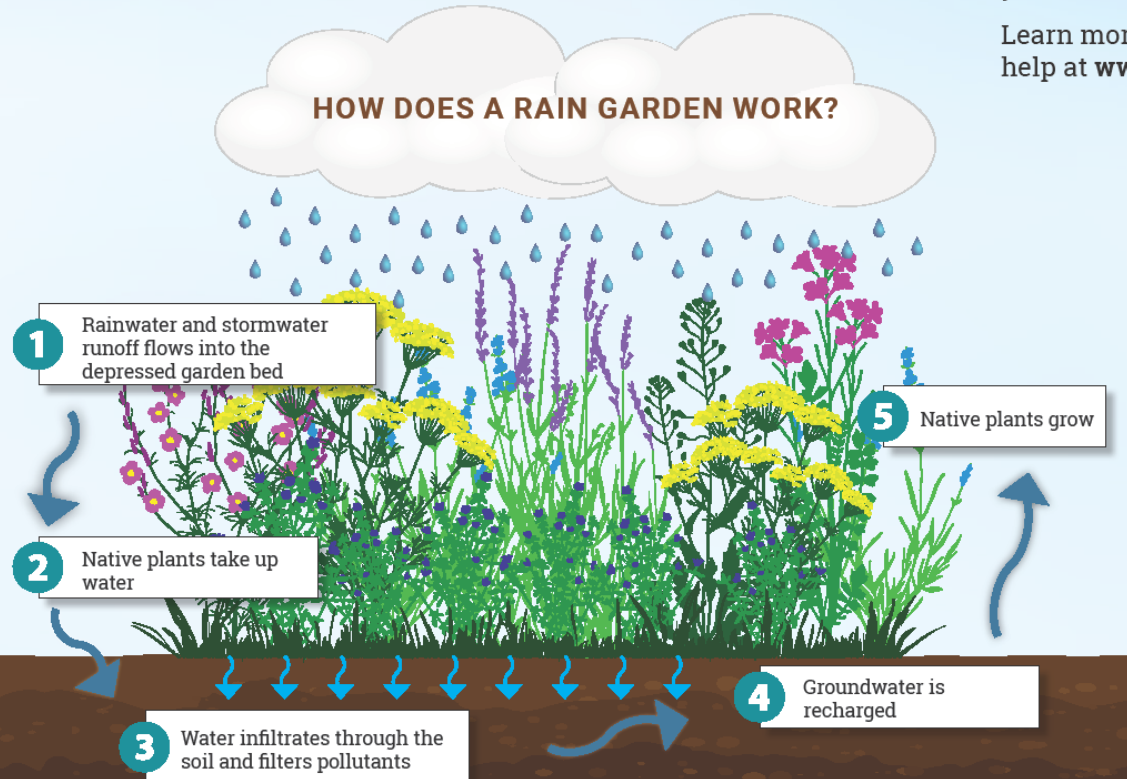
**Rain gardens protect the Plum Creek Watershed by:**

- Reducing surface runoff
- Reducing pollutants such as sediment, bacteria, etc. from entering our waterways
- Lowering the risk for flooding and erosion

This rain garden at the **Caldwell County Justice Center** has the potential of diverting approximately **1,012 pounds of pollutants** per year via infiltration.

Learn more about the Plum Creek Watershed and other ways you can help at [www.gbra.org/plumcreek](http://www.gbra.org/plumcreek).

## HOW DOES A RAIN GARDEN WORK?



## GREAT NATIVES FOR YOUR GARDEN



American Beautyberry



Texas Lantana



Mexican Feathergrass



Texas Sage



Inland Sea Oats



Gulf Coast Muhly

Funding for this project was provided by the EPA through the Texas Commission on Environmental Quality.



## SAVE WATER - GO NATIVE!

When you think of a backyard, what do you imagine? Depending on where you grew up, you may picture a simple field of green turfgrass. However, here in the Blackland Prairie of Central Texas, we are lucky to have more than 2,000 species of native flowering plants!

When you include hardy, native plants in your backyard you encourage local pollinators to stop by for a visit. Native species such as Texas Star Hibiscus and Texas Lantana are great for bringing in hummingbirds, while Texas Sage produces lovely, fragrant flowers year-round – even in drought!

By including more than just turfgrass in your yard, you not only save a significant amount of irrigation water, but also can increase habitat for native species.



The Texas Blackland Prairie is an ecoregion home to many tallgrass prairie species—from Switchgrass to Mistflower. These native plants are adapted to local climate and do not require additional irrigation to thrive.



Native plant species provide excellent habitat for migrating birds, local wildlife, and helpful pollinators like butterflies, bees, and beetles.

Here are some of the native plants you can find in the xeriscape and raingarden at the Caldwell County Justice Center:



**American Beautyberry**  
*Callicarpa americana*



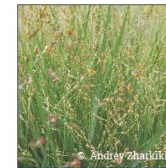
**Texas Lantana**  
*Lantana urticoides*



**Greggs Mistflower**  
*Conoclinium greggii*



**Esperanza**  
*Tecoma stans*



**Switchgrass**  
*Panicum virgatum*



**Rock Rose**  
*Pavonia lasiopetala*



**Texas Sage**  
*Leucophyllum frutescens*



**Mexican Feathergrass**  
*Nassella tenuissima*



**Four-nerve Daisy**  
*Tetrameuris scaposa*



**Texas Star Hibiscus**  
*Hibiscus coccineus*

Thank you to the Caldwell County Master Gardeners, Keep Lockhart Beautiful, and local volunteers for their support in the selection, planting, and maintenance of the native plants found at the Caldwell County Justice Center.



# RAINWATER HARVESTING

**You use water everyday. What can you do to reduce your water bill while conserving water?**

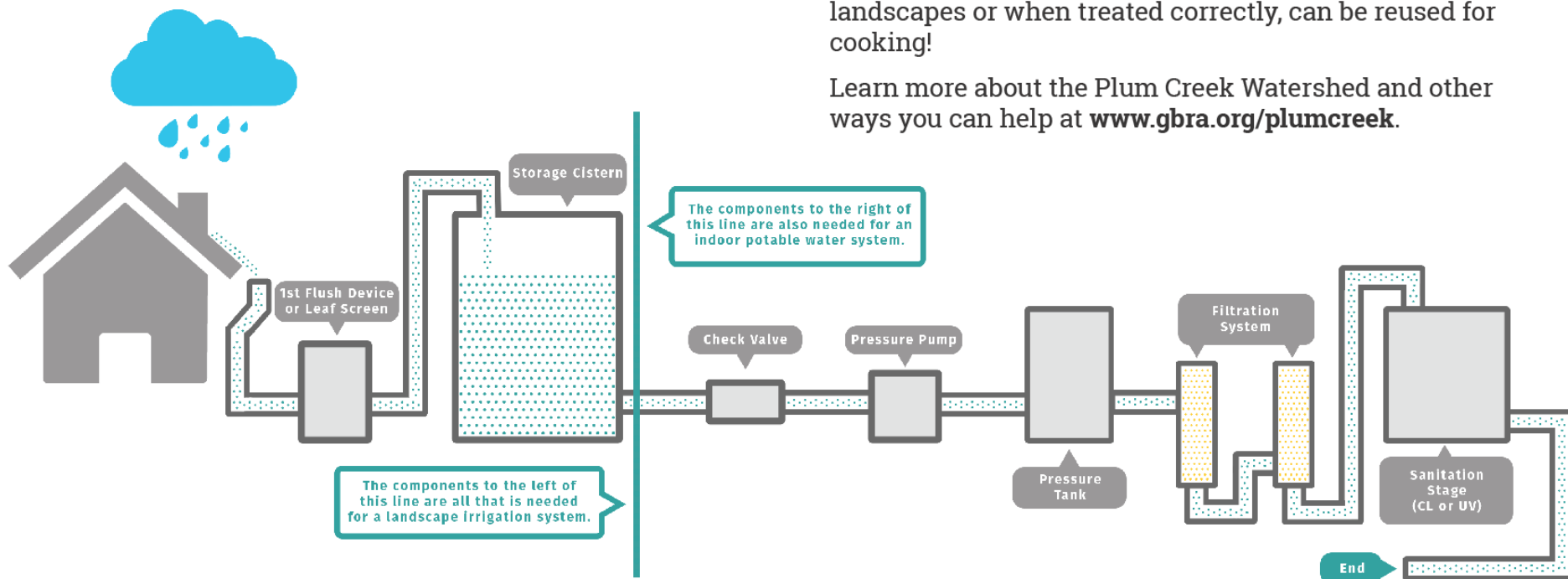
Rainwater harvesting is the collection of rainwater into a storage vessel for outdoor watering, or indoor use with the proper filtration system.

**Rainwater harvesting systems protect the Plum Creek Watershed by:**

- Reducing stormwater runoff
- Reducing nonpoint source pollution

This rainwater harvesting system at the **Caldwell County Justice Center** has the potential to collect more than **195,900 gallons** per year. Water collected by rainwater harvesting systems can be used in a variety of ways such as watering landscapes or when treated correctly, can be reused for cooking!

Learn more about the Plum Creek Watershed and other ways you can help at [www.gbra.org/plumcreek](http://www.gbra.org/plumcreek).



Funding for this project was provided in part by the EPA through the Texas Commission on Environmental Quality.



# Uhland Elementary





# Feral Hog Bounty Program

- Started February 4<sup>th</sup> 2020
- 362 feral hogs removed
- 15 Landowners



The background is a dark gray gradient. It features several realistic water droplets of various sizes, some with highlights, scattered across the surface. On the left side, there is a partial, dark silhouette of a bird's head and beak. The text 'Plum Creek' is written in a large, dark teal, stylized font, with 'Plum' on the top line and 'Creek' on the bottom line. Overlaid on this is the text 'Upcoming Events' in a white, hand-drawn, slightly irregular font. At the bottom, the words 'Watershed Partner' are written in a dark brown, serif font, though they are partially cut off on the right side.

# Plum Creek

## Upcoming Events

### Watershed Partner



# Rain Garden Volunteer Days

- Monthly Cleanups And Educational Events Starting Feb 29
- Community Groups
  - Texas State University Dept. Of Geography
  - Girl & Boy Scouts Of America
  - The Pegasus School
  - Keep Lockhart Beautiful

CALDWELL COUNTY

## RAIN GARDEN VOLUNTEER DAY

Looking for volunteers to help maintain the Caldwell County Justice Center Rain Garden. This large rain garden is a Low Impact Development (LID) feature in the Plum Creek Watershed Protection Plan. There is a unique collaboration of professionals on this LID project that Texas State students can network with.



The event coordinator for this volunteer day is Maximilian Stuart, Vice President of Gamma Theta Upsilon. Volunteers are not limited to Gamma Theta Upsilon members. For more information contact Maximilian at [mks132@txstate.edu](mailto:mks132@txstate.edu).

EARN VOLUNTEER HOURS

---

WORK WITH THE PLUM CREEK WATERSHED COORDINATOR

---

MEET LOCAL GARDENERS AND TREE FOLK

---

WORK WITH AN ENVIRONMENTAL ENGINEER AND COUNTY GRANT WRITER

---

LEARN ABOUT LOW IMPACT DEVELOPMENT

February 29  
8-10 A.M.

1703 S Colorado St  
Lockhart, TX 78633

# 2020 Caldwell County Tree Adoption Event

ccTREE.org

## Locations

Lockhart Food Pantry  
Luling Public Library  
Lockhart Public Library  
Martindale United  
Methodist Church  
McMahan Women's  
Center  
Dale Community Center  
Lytton Springs General  
Store

➤ Goal: Plant  
1,000 Trees in  
April

➤ Dates

- April 18
- April 25

➤ Sign-up at

- ccTREE.org



# Great Texas River Cleanup

---

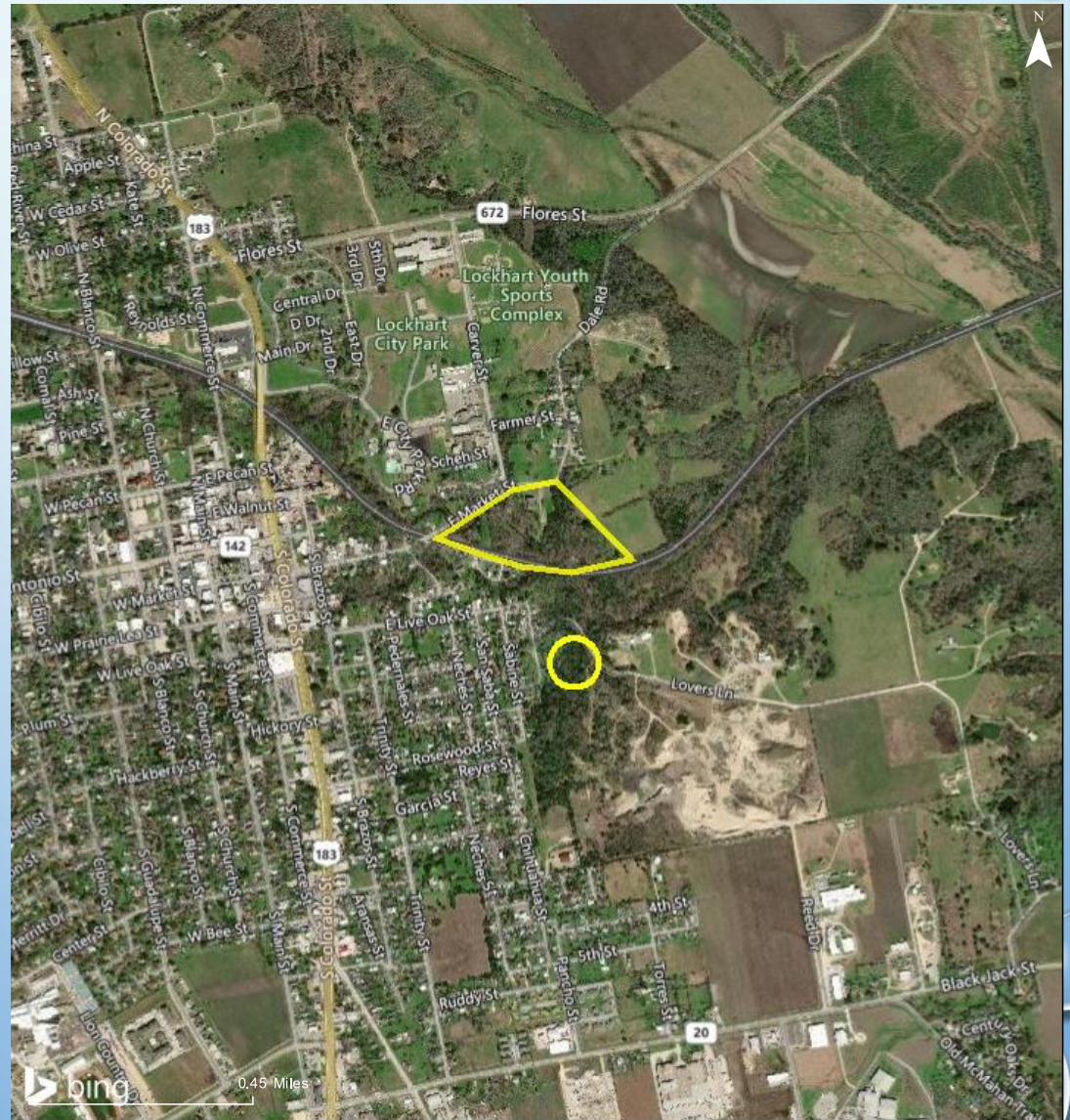
- Saturday, March 7  
2020 @ 9am
- Location
  - Kyle, TX
- 2019 Results
  - 58 volunteers
  - 2000 lbs. of trash
  - 550 lbs. of metal recycling
  - 4 tires





# Plum Creek Watershed Cleanup

- May 2<sup>nd</sup> 2020
- Locations
  - E. Market St
  - Lover's Ln
- Sponsors
  - City of Lockhart
  - Keep Lockhart Beautiful
  - Caldwell County
  - The Plum Creek Watershed

















➤ Over 265 homes are in the subdivision on onsite wastewater systems

➤ Majority of lots are small, wastewater issues are reported often to the County

➤ Upcoming planning meeting with Dain Larsen, Texas Water Development Board

➤ Sign up today!

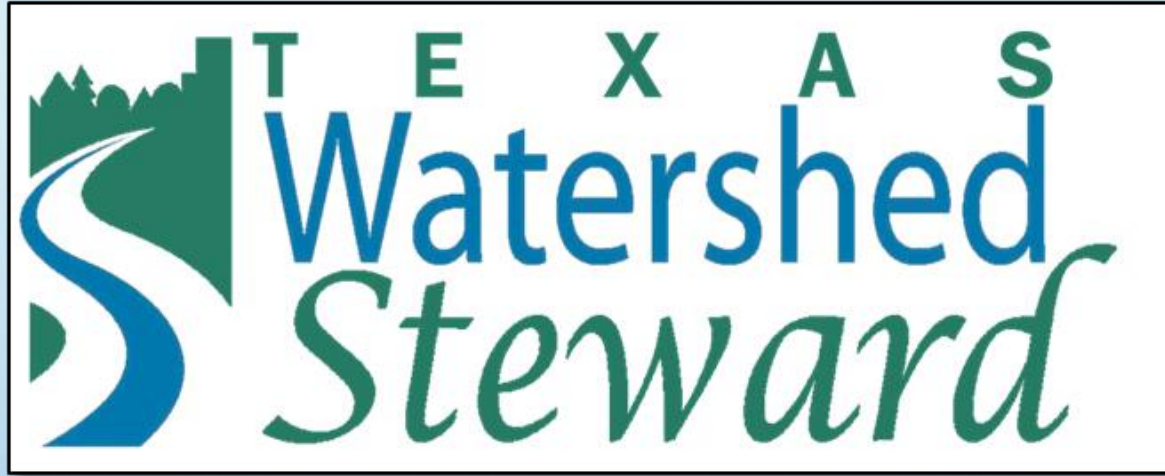
# Hillside Terrace





# Texas Watershed Steward Workshop

---



- Wednesday, June 2, 2020
- Luling Foundation Farm 8am-12pm
- Educating and informing local stakeholders about their watershed, potential impairments, and steps that can be taken to help improve and protect water quality in their watershed.



Questions?



# Steering Committee Updates

---

- Individual Member Updates?
- Any updates regarding our 5 strategies?
  - Urban Stormwater Management
  - Wastewater Management
  - Agricultural Non-Point Source Management
  - Wildlife & Non-Domestic Animal Management
  - Education and Outreach
- Grant funding ideas or needs?

The background is a light blue gradient with several realistic water droplets of various sizes scattered around the edges. The droplets have highlights and shadows, giving them a 3D appearance.

# Next Meeting

May 2020

6:30pm

Kyle, Tx



# Thanks!

**Steve Risinger**

**Plum Creek Watershed Coordinator**

**[srisinger@plumcreekwatershed.org](mailto:srisinger@plumcreekwatershed.org)**

**405 E. Market Street**

**Lockhart, TX 78644**

**(830) 557-7358**



**TEXAS STATE**  
**Soil & Water**  
**CONSERVATION BOARD**

